



ECONO-SLAB™
STOP DIGGING. START BUILDING.

P. 844.434.6275
econo-slab.com

4145 North Service Road, 2nd Floor
Burlington, Ontario L7L 6A3



With cost savings of up to 50% over conventional foundations, why wouldn't you call?

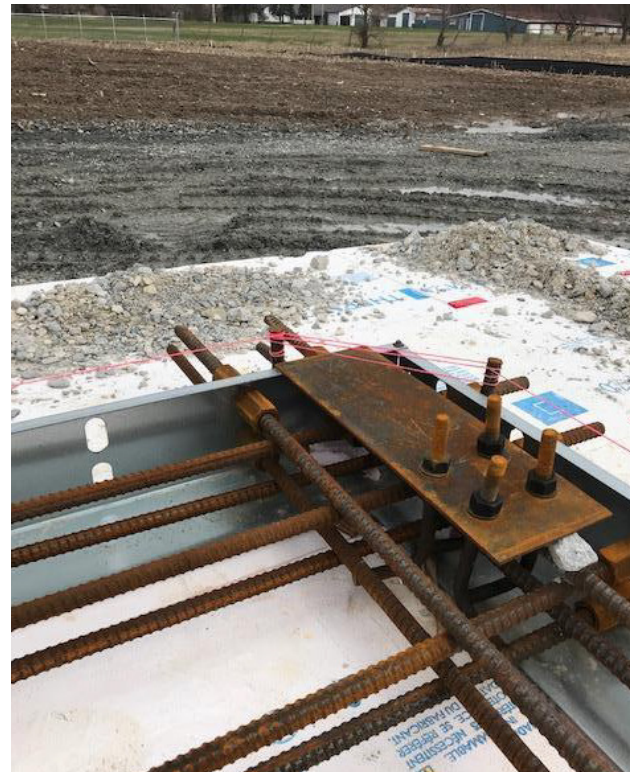
ECONO-SLAB™ Pre-Fabricated Foundations allow you to have a foundation in place by the time your building arrives on site. Even three-week deliveries.

The ECONO-SLAB™ is a patented, pre-engineered, dimensionally stable metal form and pre-cut bar package designed specifically for your structure, manufactured then shipped to the Jobsite for assembly. Any contractor can easily install it by following the drawings.

The result is an engineered, structurally superior, cost-effective floating foundation that requires no control joints. Stamped, engineered drawings can be delivered, usually within five days of ordering. Pre-fabrication allows the ECONO-SLAB™ to arrive at your job site in days. We can quote buildings with up to 22,500lb with our pre-engineered tables. column loads.

Anchor Bolts

The ECONO-SLAB™ eliminates one of the biggest issues with your anchor bolt placement! Location Templates guarantee anchors are set in the exact position required.





ECONO-SLAB™
STOP DIGGING. START BUILDING.

P. 844.434.6275
econo-slab.com

4145 North Service Road, 2nd Floor
Burlington, Ontario L7L 6A3



The below chart is a guide for when the stock **ECONO-SLAB™** can be used:

Snow Load	Building Width	Bay Spacing	Load per Column
55 lbs.	54'-0"	15'-0"	22,275 lbs.
55 lbs.	40'-0"	20'-0"	22,000 lbs.
55 lbs.	30'-0"	25'-0"	20,625 lbs.
50 lbs.	60'-0"	15'-0"	22,500 lbs.
50 lbs.	45'-0"	20'-0"	22,500 lbs.
50 lbs.	35'-0"	25'-0"	21,875 lbs.
45 lbs.	65'-0"	15'-0"	22,000 lbs.
45 lbs.	50'-0"	20'-0"	22,500 lbs.
45 lbs.	40'-0"	25'-0"	22,500 lbs.
40 lbs.	70'-0"	15'-0"	21,000 lbs.
40 lbs.	55'-0"	20'-0"	22,000 lbs.
40 lbs.	45'-0"	25'-0"	22,500 lbs.

Call **ECONO-SLAB™** to check on any application.
The **ECONO-SLAB™** will, of course, do anything lighter
and support many types of structures.

